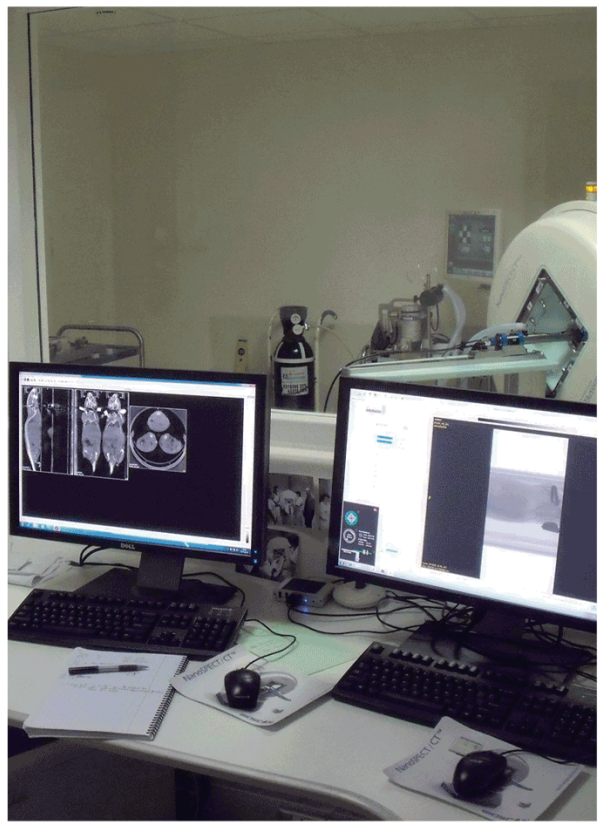


Pharmimage®

A bridge between preclinical and clinical pharmacology.



WHY USE PHARMACO-IMAGING?

Functional and molecular small animal imaging enables a non-invasive quantification of biomarkers to answer the following questions:

- Is the target expressed?
- Does the drug reach the target?
- Is the target inhibited/activated, inducing downstream biochemical and biological change?
- Are there any potential toxicities and drug-drug interactions?
- Are all of these changes related to a clinical endpoint?

All of these imaging biomarkers are a unique opportunity for:

- Tumor model characterization: orthotopic tumor growth, metastasis, in-situ biodistribution of the radiolabeled drug
- Candidate selection: efficacy comparison of selected candidates on a validated imaging assay
- Clinical biomarker selection (dose, time for clinical response, feasibility of the clinical set-up implementation)

Translational expertise and unparalleled panel of imaging instrumentation.

Pharmimage® unites complementary skills in computer science, physics, electronics, chemistry, radiochemistry, biology, medicine and pharmacology to provide our clients efficient and comprehensive drug evaluation solutions.

Through Pharmimage®, you have access to a unique expertise in multi-

parametric pharmaco-imaging for both preclinical and clinical applications:

- Magnetic resonance imaging (MRI) and spectroscopy (MRS)
- Positron emission tomography (PET)
- Single photon emission computed tomography (SPECT)
- X-ray computerized tomography (CT)
- Ultrasound (US)
- Fluorescence and luminescence optical imaging
- Cyclotron
- Radiochemistry labs

Preclinical to clinical transition.

- Imaging of clinically relevant models
- The same imaging modalities and biomarkers can be used in your later clinical studies

Pharmaco-imaging in clinical drug development.

The main objective is to deliver new active drugs to clinicians earlier and with more accuracy by determining clinically useful biomarkers for:

- Diagnosis
- Patient stratification
- Companion pharmacodynamic endpoints
- Early phase 0 clinical trials
- Drug efficacy monitoring for personalized medicine

For more information email contact@oncodesign.com

www.oncodesign.com

Pharmimage® is part of a comprehensive portfolio of translational rodent models and services offered by Oncodesign.

